



THE COLLEGE OF
OPTOMETRISTS

Stage Two

Overarching case scenario 35

AGE AND GENDER 52 years old, male

ETHNIC BACKGROUND Caucasian

OCCUPATION AND HOBBIES Self-employed 'handy-man', does woodwork, plumbing repairs, painting and decorating, gardening. Driver

PRESENTING SYMPTOMS AND HISTORY Specs get damaged at work, would like glass lenses. Problems with working at different distances in job (needs to get too close with reading specs). DV good. Worn specs for 5 years, last test 18 months ago.

GENERAL HEALTH AND MEDICATION Diabetic, Type II for 6 years, takes Metformin tablets. Attends diabetic clinic at GP every 6 months.

PRESENT Rx, CENTRATION AND ACUITIES RE +2.25DS N5 @ 35cm
LE +2.25DS N5 @ 35cm
CR39 ½ eyes, OC 68mm "ready readers" since last proper pair got broken.
PD/NCD 63/60mm

VISION RE 6/6 +3, N18 LE 6/6 +1, N24

PINHOLE VISION RE 6/5 LE 6/5

REFRACTION RE +0.50/-0.25 x 90 add +1.00 / +1.75
LE +0.50/-0.50 x 75 add +1.00 / +1.75

VA Distance RE 6/5, LE 6/5, Binoc 6/5
Near RE N6 / N5 LE N6 / N5 Binoc N5 / N5 @ 60 / 40cm

ACCOMMODATION RE 2D, LE 2D, Binoc 3D

BINOCULAR STATUS Cover Test DV: Orthophoria
Cover Test NV: 5^ exophoria
Near Mallett Unit: no fixation disparity @ 40cm

MOTILITY Full and smooth in all directions, no diplopia reported

CONVERGENCE 8cm

PUPIL REACTIONS PERRL

FUNDUS EXAMINATION see attached photo

FIELDS see attached plot

IOP RE 28, 26, 25 mmHg LE 24, 23, 25 mmHg, Pulsair @ 9.15am
RE 28mmHg LE 25mmHg Goldmann tonometer @ 10.00am following insertion of Lignocaine

EXTERNAL EYE EXAMINATION see attached photo

Fundus RE



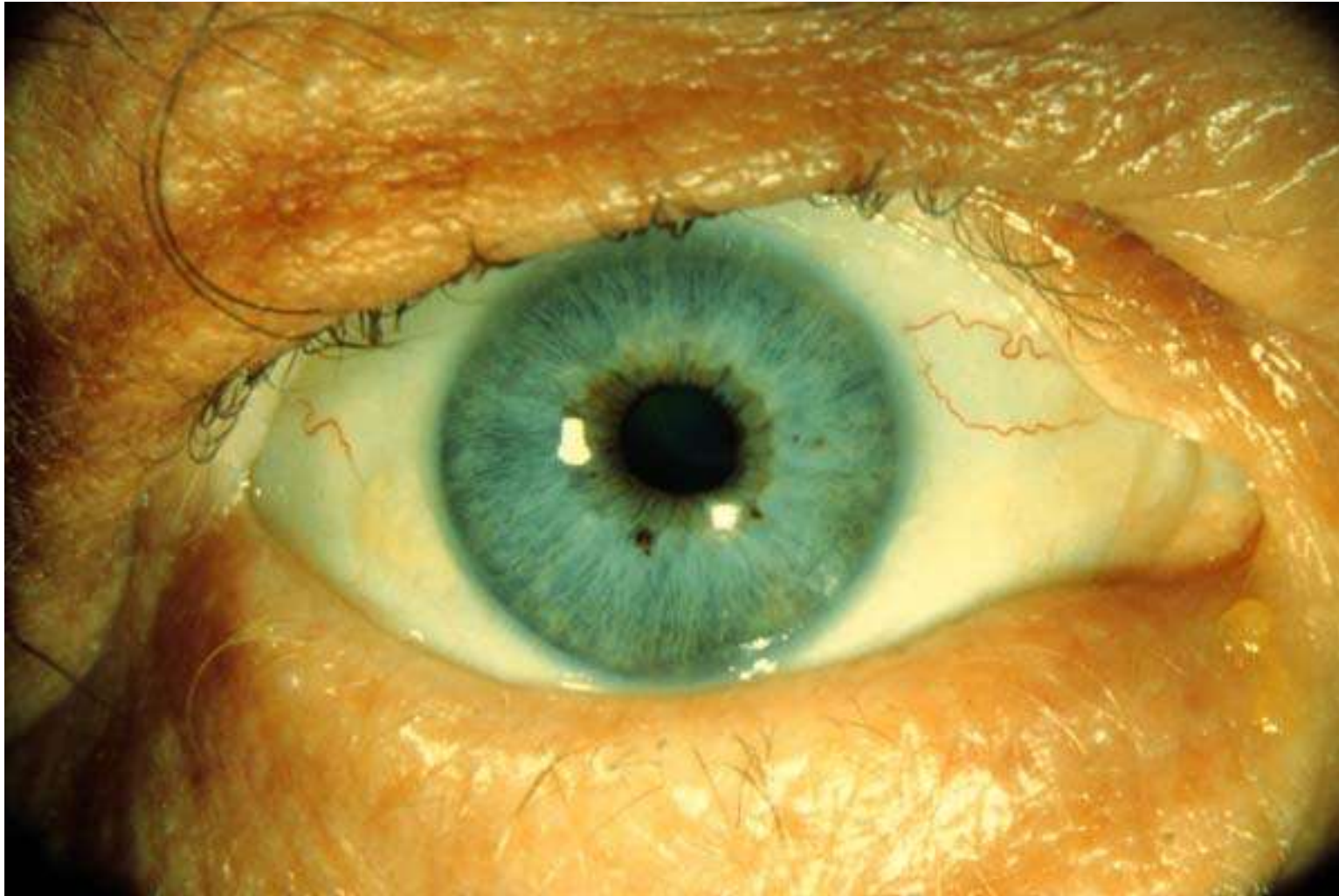
R35

Fundus LE



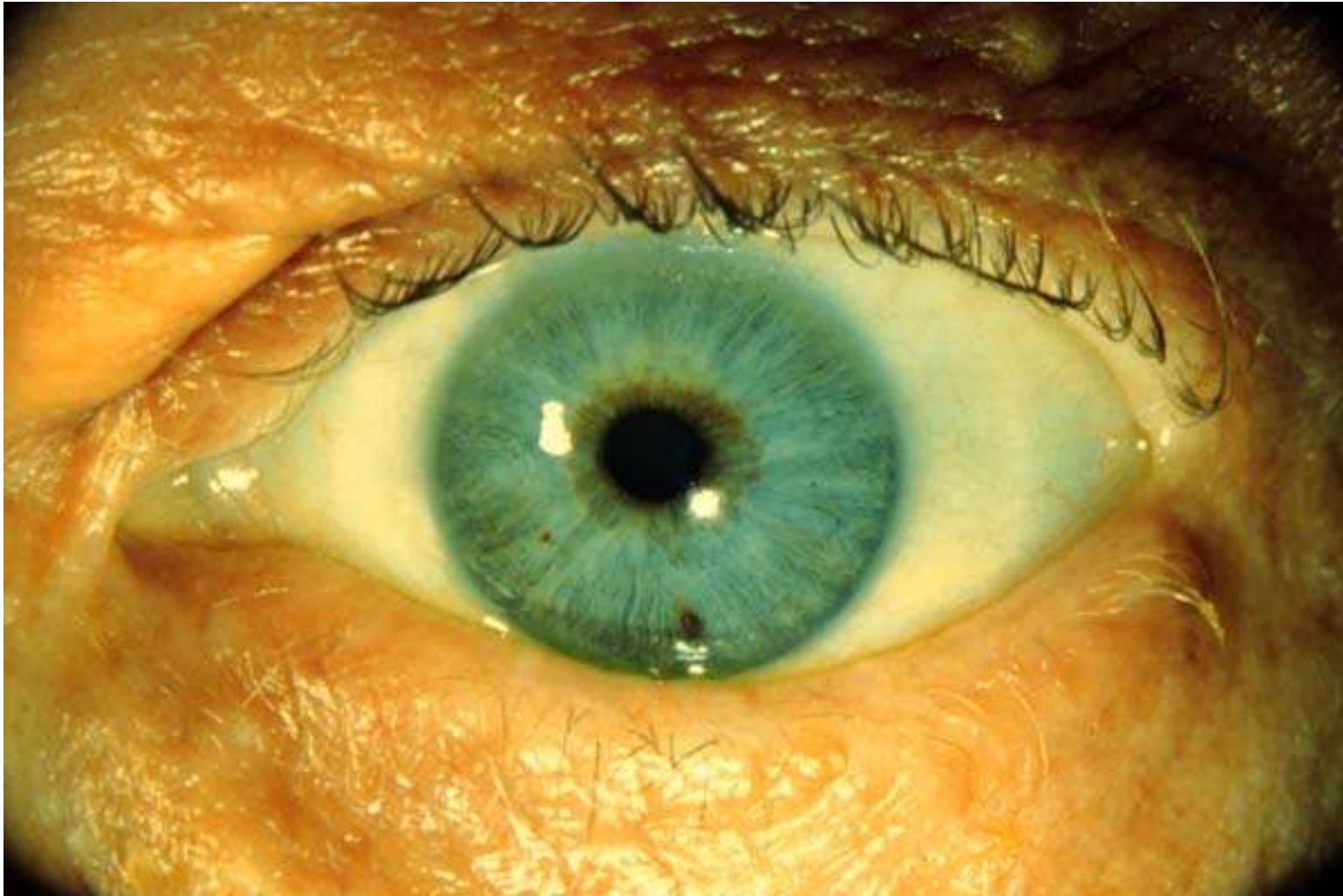
R35

External RE



R35

External LE

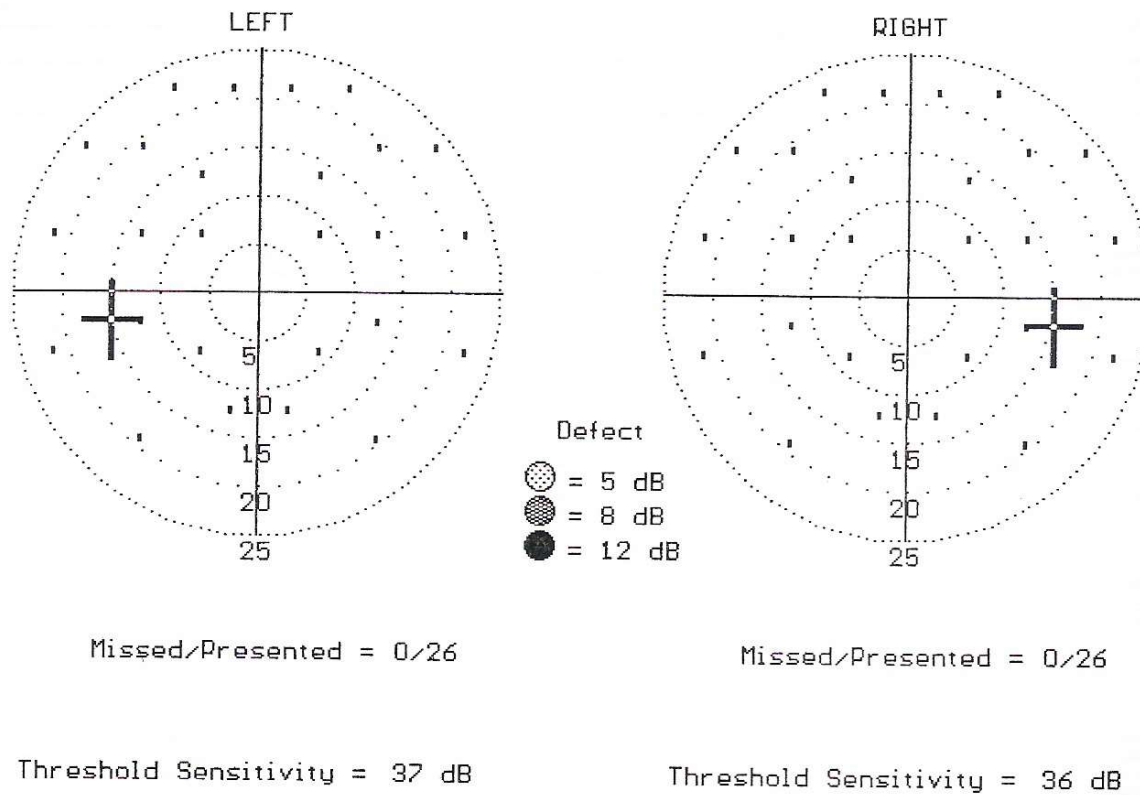


R35

Field RE & LE

Multiple Stim Supra-thresh

Central Field Test



Colour Vision Binocular

ISHIHARA TEST SCORE SHEET (38-PLATE EDITION, 1979)

NAME:

DATE:

PLATE	SCORE	NORMAL	DEFICIENT	TOTAL CB/ WEAK	PROT ANOMALY		DEUTER ANOMALY	
					ANOPIA	ANOPIA	ANOPIA	ANOPIA
1	12	12	12	12	12	12	12	12
2	3	8	3	-				
3	6	6	5	-				
4	29	29	70	-				
5	57	57	35	-				
6	8	5	2	-				
7	3	3	5	-				
8	15	15	17	-				
9	24	74	21	-				
10	2	2	-/X					
11	6	6	-/X					
12	97	97	-/X					
13	45	45	-/X					
14	5	5	-/X					
15	7	7	-/X					
16	10	16	-/X					
17	73	73	-/X					
18	-	-	5	-				
19	-	-	2	-				
20	-	-	45	-				
21	-	-	73	-				
22	26	26			6	(2)6	2	2(6)
23	42	42			2	(4)2	4	4(2)
24	35	35			5	(3)5	3	3(5)
25	96	96			6	(9)6	9	9(6)

NOTES: - no numeral read X incorrectly read A(B) A clearer than B